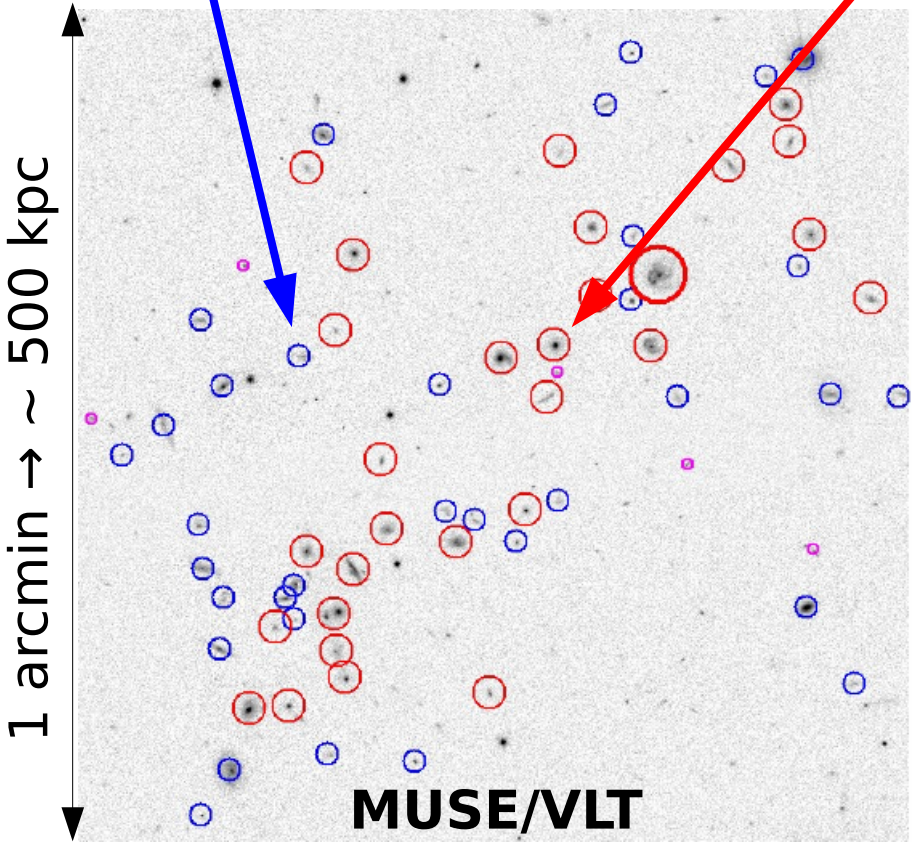


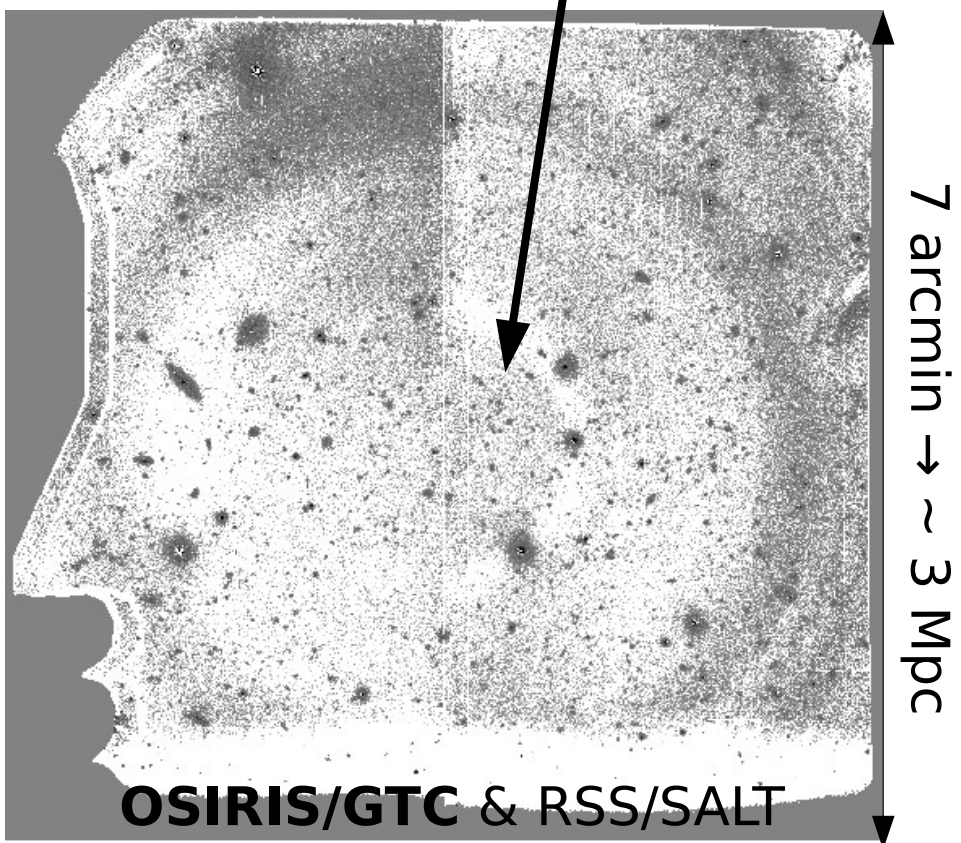
Galaxy mass assembly in various environments

Galaxy evolution drivers & impact of environment over 10 Gyr

Increasing density



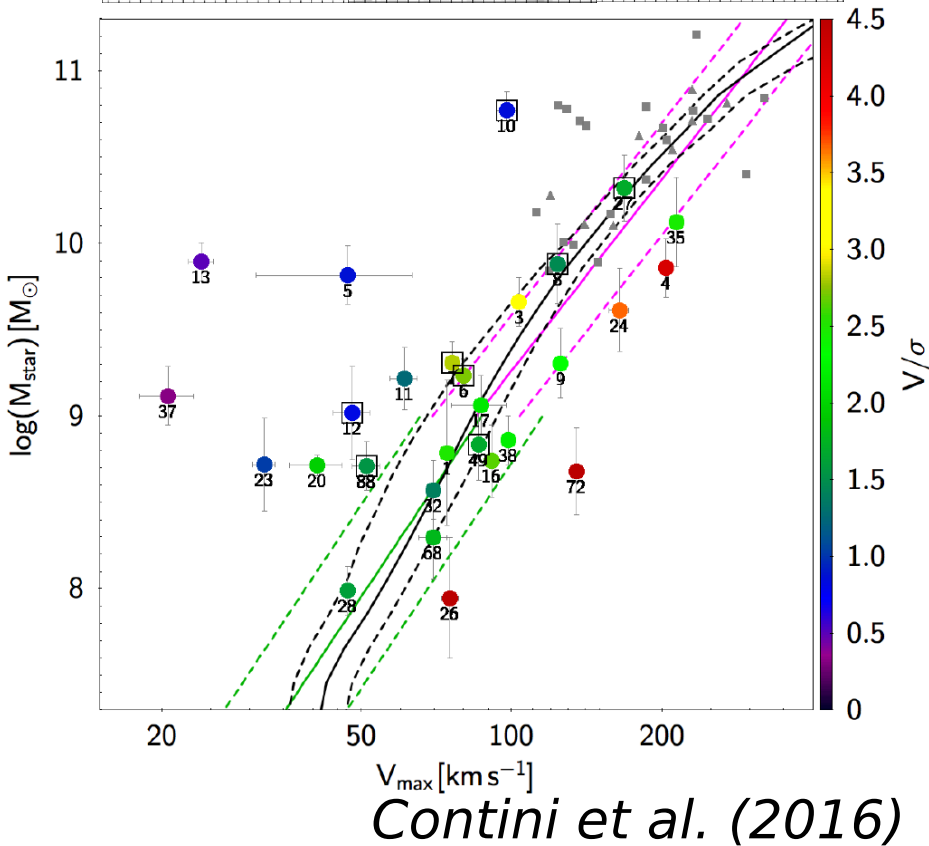
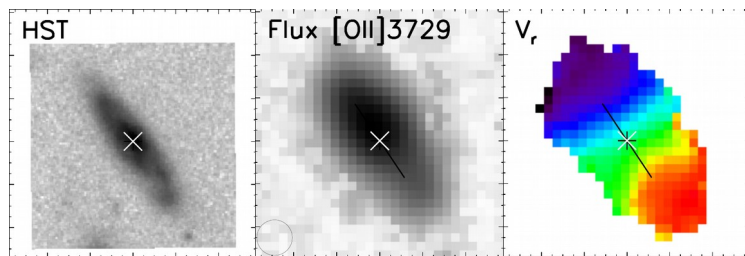
Many MUSE-GTO fields!



3 clusters + KMOS/VLT

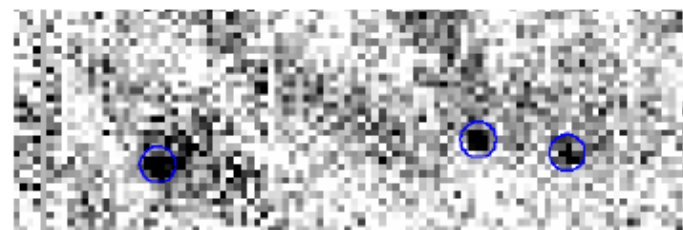
MUSE highlight

Kinematics down to low mass



Cluster highlight

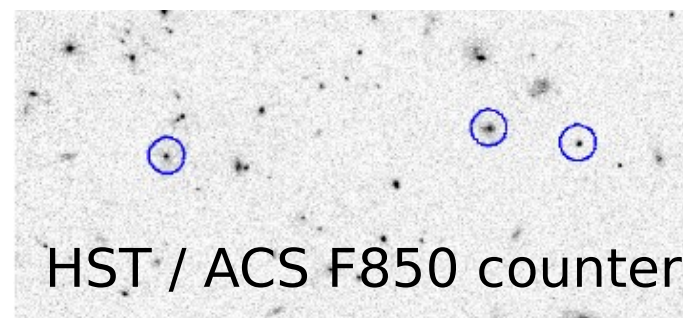
[OII] emitters close to the center of a $z \sim 1.46$ cluster



OSIRIS: [OII] detection



OSIRIS: any other wavelength



HST / ACS F850 counterpart